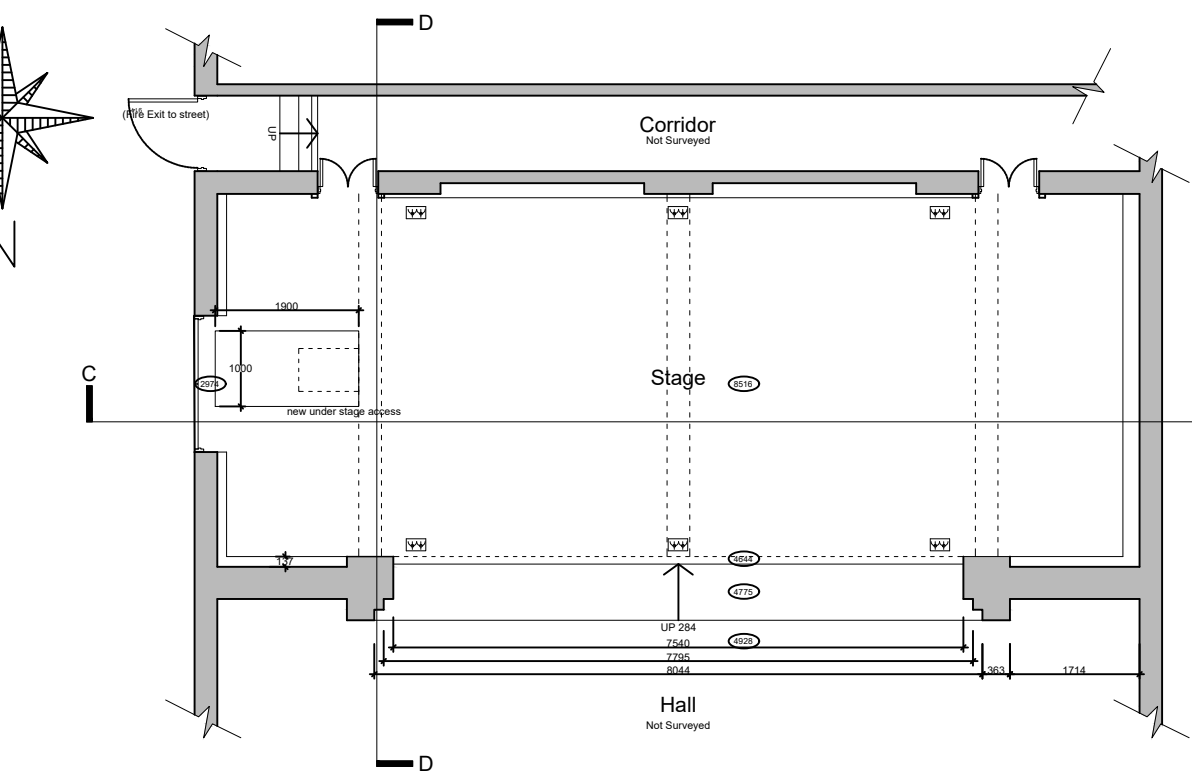
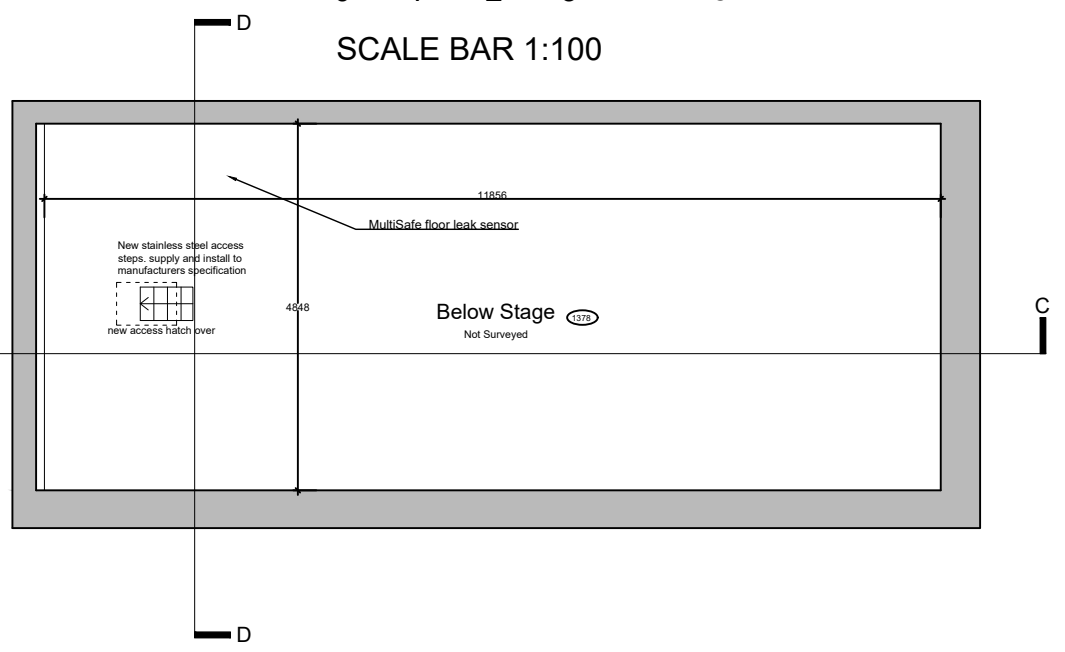


Do not scale from this drawing for construction. Figured dimensions only to be taken. Check all dimensions prior to setting out. Report all discrepancies to the Architect.

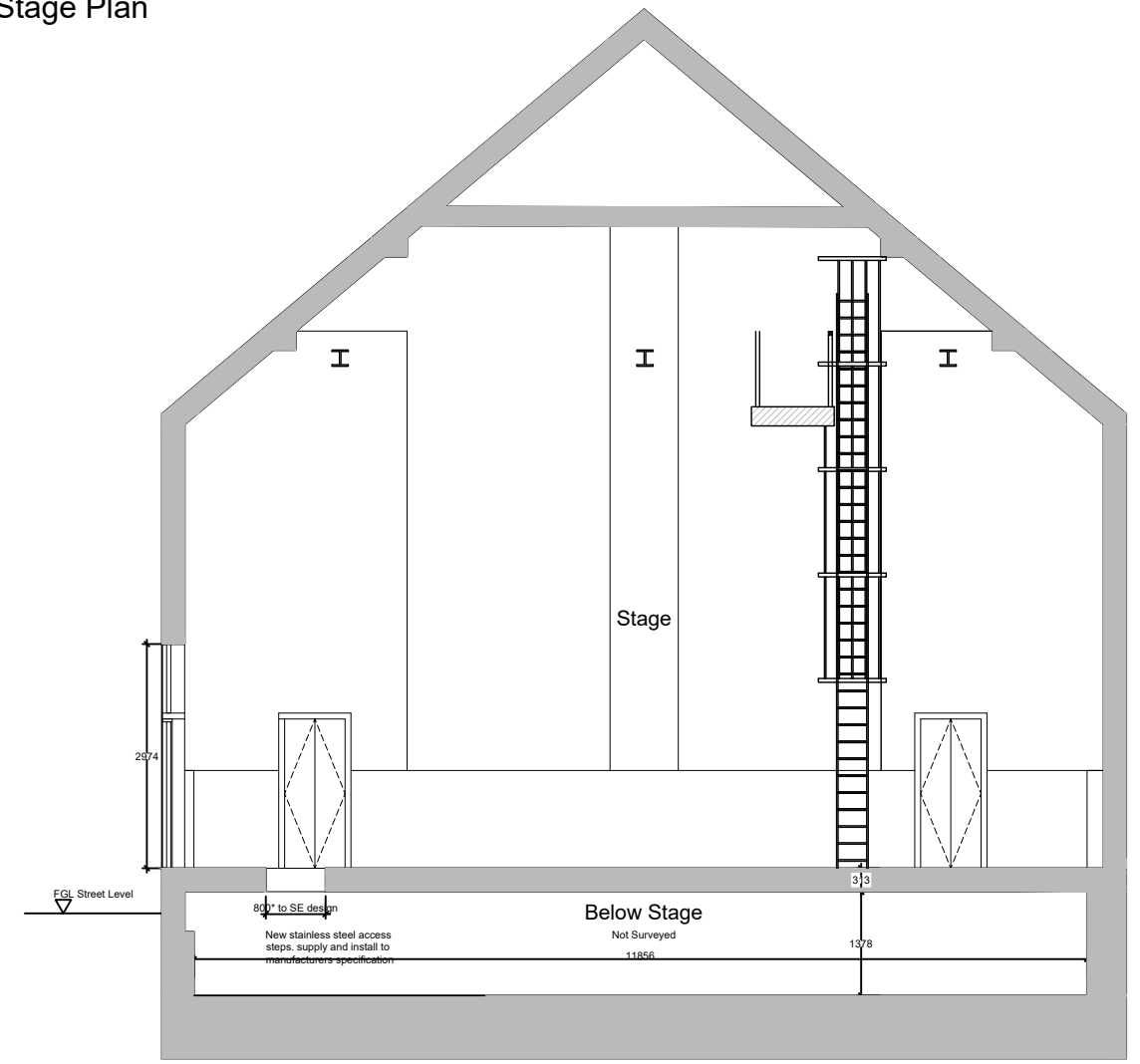
Revisions



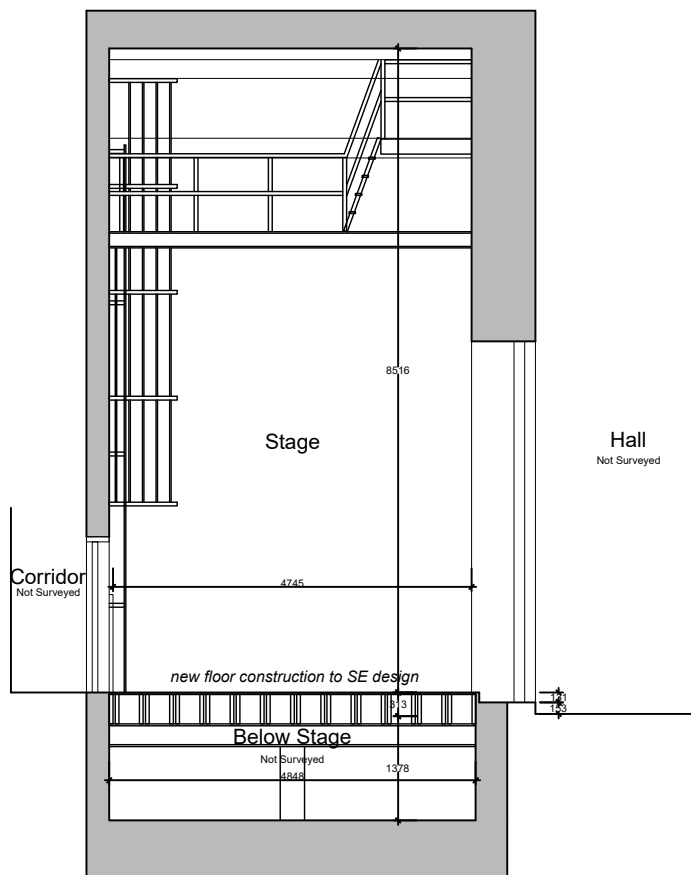
Stage Plan



Below Stage Plan



Section CC



Section DD

Electrical Legend

- EXTERNAL LIGHTING (PIR)
- PENDANT LIGHT FITTING
- RECESSED LED SPOT LIGHT FITTING
- FUSED SPUR
- WALL MOUNTED LIGHT FITTING
- WALL MOUNTED LIGHT SWITCH
- WALL MOUNTED LIGHT SWITCH 2 WAY
- SINGLE / DOUBLE SWITCHED SOCKET OUTLET
- FLOOR MOUNTED SINGLE / DOUBLE SWITCHED SOCKET OUTLET
- LED STRIP LIGHTING
- RADIATOR
- MECHANICAL EXTRACT FAN
- HOT AND COLD WATER SUPPLY

TENDER

Robin Nugent Architects
Chartered Architects ©
Castle Barn Sedgwick Horsham
West Sussex RH13 6QJ

T: 01403 734858 F: 01403 738368
E: robin@robinnugentarchitects.co.uk
W: www.robinnugentarchitects.co.uk

Client:
Mrs Beverley Ball

Project:
Cranleigh Village Hall, Village Way,
Cranleigh, GU6 8AF

Phase I Refurbishment

Drawing Title:
Proposed Stage Plans and Sections

Scale: 1:100 **Date:** Mar24 **Drawn by:** JD

Drawing No: 24865/211 **Revision:** --

< Original size 60mm - A3 at full size >