



Cranleigh Parish Council

Review of Cranleigh's Area of Strategic Visual Importance (ASVI)



July 2018

Review Snoxhall Area of Strategic Visual Importance (ASVI)

Snoxhall Fields, an area to the south of the village was designated an Area of Strategic Visual Importance (ASVI) in 1984. Waverley Borough Council has a long history of protecting these important areas.

The 1981 Local Plan Brief set out the criteria for designation as *“They are areas of predominantly open land, usually adjacent to urban areas and perhaps relatively small, whose importance lies in the crucial role they play in preserving the character of the locality. The District Plan set out to identify such areas with policies for protection.”*

ASVI's were then defined in the 1984 Local Plan as having a *‘crucial role in establishing the character of a locality and preventing the coalescence of developed areas’*.

Waverley Borough Council's Local Plan 2002 reiterated this role and included the ASVI policy C5. It stated that:

“As well as the areas of landscape quality, there are other areas which need protection because of the crucial role they play in preventing the coalescence of settlements or because they are an area of open land that penetrates into the urban area like a green “lung”. They are strategic areas because of the part they play in retaining the character of Farnham, Godalming, Haslemere and Cranleigh. In some areas, the urban fringe is vulnerable to deterioration and in a number of instances neglected areas of land can appear degraded. The ASVI policy highlights the importance of these fringe areas and the need to protect them.

Policy C5 – Areas of Strategic Visual Importance

The Council will seek to ensure that the appearance of Areas of Strategic Visual Importance, as shown on the Proposals Map, is maintained and enhanced. Development inconsistent with this objective will not be permitted.”

Waverley's Local Plan Part One Policy RE3, which was found sound by the Inspector, reinforces this protection and commitment to enhancing the distinctive character of the landscape and confirms with regard to ASVIs that:

“iv. The Area of Strategic Visual Importance

Pending a review of the detailed boundaries in Local Plan Part 2, the Areas of Strategic Visual Importance will be retained. The appearance of the ASVI will be maintained and enhanced. Proposals for new development within the ASVI will be required to demonstrate that the development would not be inconsistent with this objective.”

Waverley's Local Landscape Designation Review which formed part of the Waverley Landscape Report (AMEC, August 2014) reported that “This ASVI is either side of the Downs Link path in Cranleigh, covering a small park and playing fields to the south of Cranleigh Leisure Centre. The fields provide open land but as playing fields they do not preserve character, as they are more obviously man made than the rural land to the west. However this did not take into account the considerable loss of the rural land to the west of this area to development, the setting of the Downs Link, or the increasing role that this area now plays as it penetrates into the heart of the rapidly growing urban area of the village, with a 38% increase in dwellings, providing an even more valuable ‘green lung’. The area also provides localised as well as far reaching views.

The Cranleigh Design Statement 2008 also refers to the ASVI statement in the 2002 Local Plan and further added “To this end they should be maintained and enhanced.”.

What is an ASVI?

ASVI is a local landscape designation for an area considered to have high visual quality.

The main issues and values the designation seeks to address are:

- Where land is vulnerable to development pressure
- Protection is essential due to strategic visual importance
- Strong environmental reasons
- Preservation of the character of the locality
- Preventing coalescence

The areas identified to be included in this designation are:

- Snoxhall Fields and the area known as The Paddock (existing ASVI)
- Eastern Corner of Snoxhall Field
- Beryl Harvey Conservation Field including allotments
- Additional Fields to the west of the Downs Link path and the east of the Beryl Harvey Field

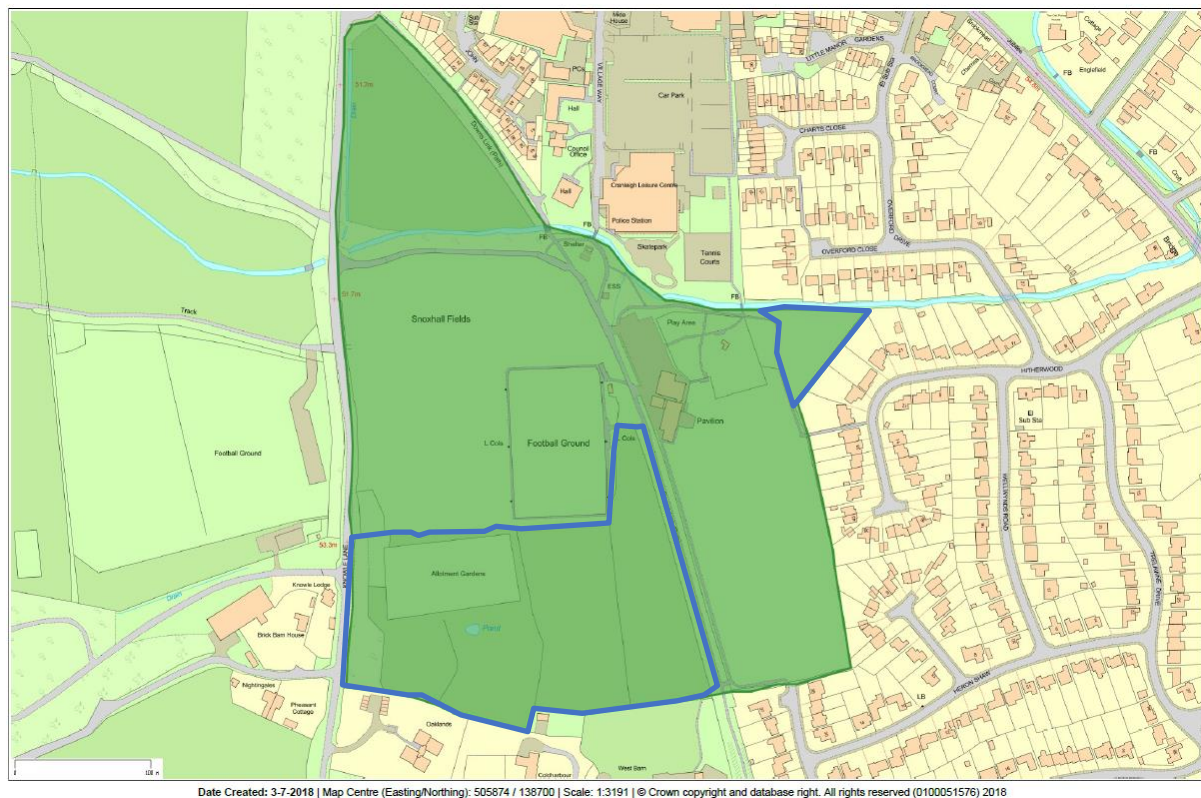


Figure 1: Proposed extended ASVI indicated by blue outline

Snoxhall Fields

It is likely that the land relating to Cranleigh's ASVI was at some point part of Knowle Manor, and by the 1830's was part of Knowle Farm. The fields now provide open land used for recreational purposes and were left to the community under Parish Council care in 1948, the area was expanded in 1971 when the Parish Council purchased an additional adjacent area.



Figure 2: View to the Surrey Hills AONB from Snoxhall Fields

The ASVI is located either side of the DLp and at the heart of Cranleigh, covering a medium sized play park and playing fields. Adjacent to this on the southern edge are the allotments and Beryl Harvey Conservation area, not currently included in the ASVI.

The top triangle area (known as The Paddock) of the existing ASVI has been owned since December 2010 by the Cranleigh Village Hospital Trust (CVHT).

The remainder of the ASVI remains under the ownership of Cranleigh Parish Council and the area of Snoxhall Fields to the east of the Downs Link path (DLp) is held on charitable trust and the entire Parish Council owned area is registered under Fields in Trust.

The ASVI is located outside the settlement boundary and on the narrow rural un-kerbed Knowle Lane, the setting contains many mature trees, including several oaks and the Littlemead Brook. Typical of the surrounding low Weald landscape, comprised of small fields enclosed by strips of woodland (shaws) and non-continuous hedgerows containing native species with views to the undulating landscape beyond including key views of the Surrey Hills AONB.

The site also contributes the village character and setting providing a smooth transition between the built environment and the countryside beyond and linking into and integrating the settlement of Cranleigh within its rural landscape.

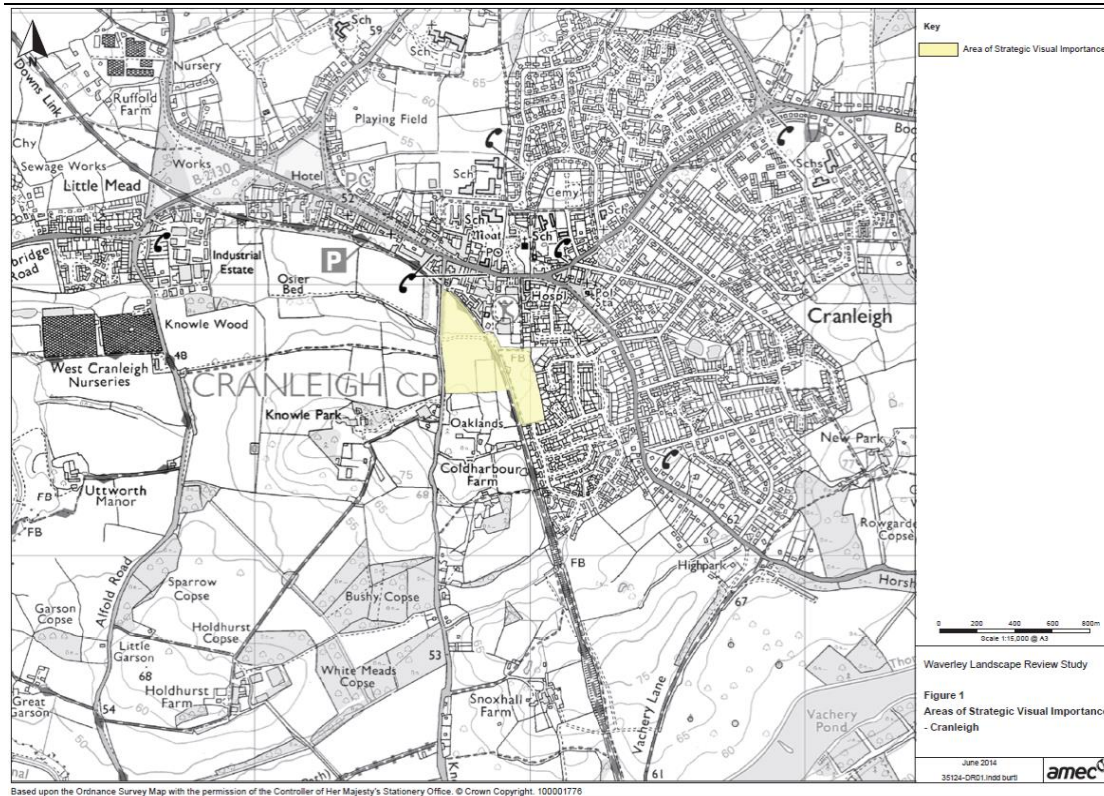


Figure 3: Current Cranleigh ASVI as protected under policy RE3 of Waverley Local Plan Part One

With the recent significant planning applications approved for an expansive area west of this land for 765 new dwellings, extending from Knowle Lane up to and including West Cranleigh Nurseries, this distinctive open area is even more vulnerable to development pressure and provides an important central and open view for both residents of Cranleigh and visitors. Recent development is in the main concentrated along the DLp in Cranleigh and all open views from the path as it passes through the village - apart from this single protected key point within the ASVI - will be obstructed.

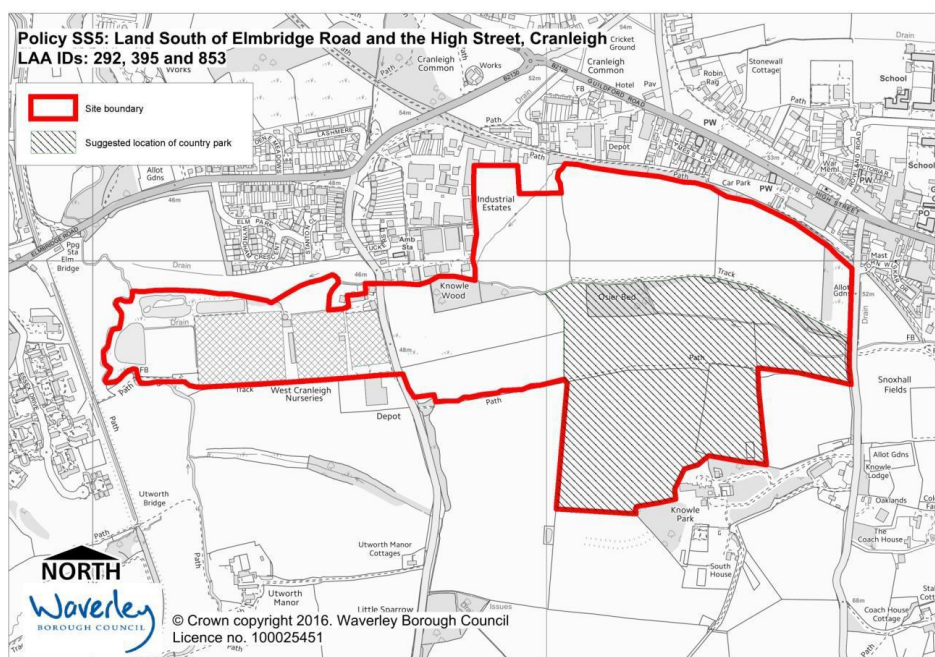


Figure 4: Main Strategic site for 765 new dwellings granted for Cranleigh



Figure 5: Snoxhall Fields football practice

With some 300 members of Cranleigh Football Club using this area weekly, in addition to an average 750 people of all ages using the play park areas, as well as walkers, cyclists and runners on the DLp, this ASVI is a valuable community space (see Appendix A).

Whilst views for car users on Knowle Lane towards the ASVI are partially screened by vegetation, the lane has no pavement and is therefore infrequently used by pedestrians. The value of the ASVI is from within the area itself and accessible to all users of Snoxhall Fields and the DLp.

Views for users of the DLp and Snoxhall Fields are open, include the Surrey Hills AONB (see Figure 2: View to the Surrey Hills AONB from Snoxhall Fields), are accessible to all, extend into the heart of the village and contribute both towards a positive experience of the natural landscape and well-being.

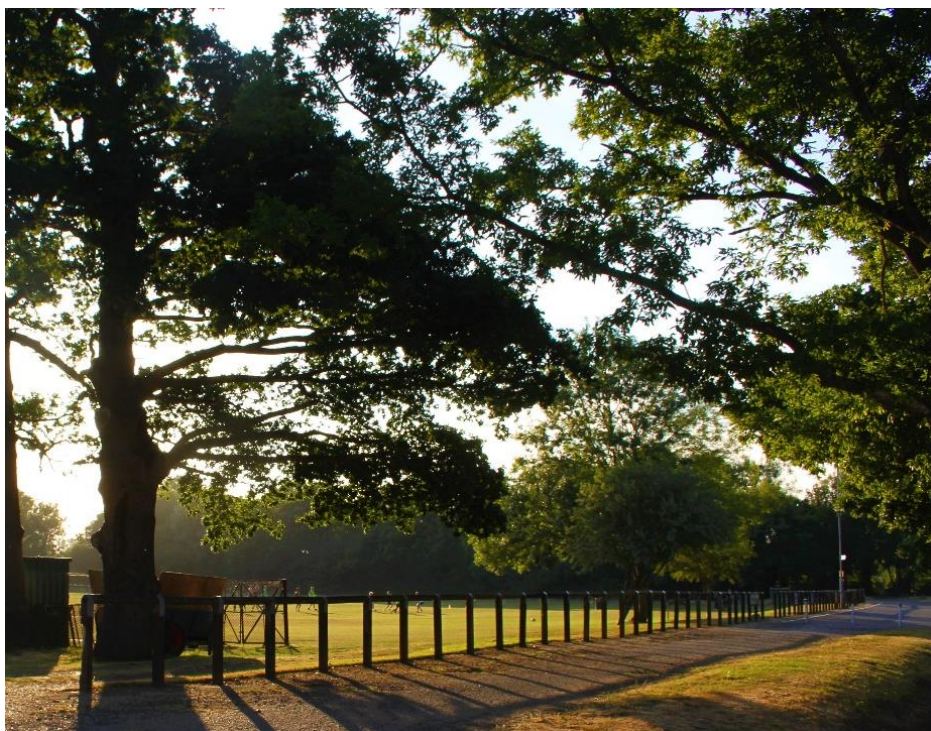


Figure 6: Downs Link Path through Snoxhall Fields heading north west

Due to the recent high level of speculative development on Cranleigh's green fields there has been a degradation in the rural character of the village and of open views from the DLp. The ASVI provides key open views and recreational space in the centre of the village, providing a welcome break in the built environment and within a short walking distance of the High Street.

Waverley's Landscape Review June 2014 records this area as an ASVI and this designation was found to be sound by the Inspector of Waverley's Local Plan Part One.

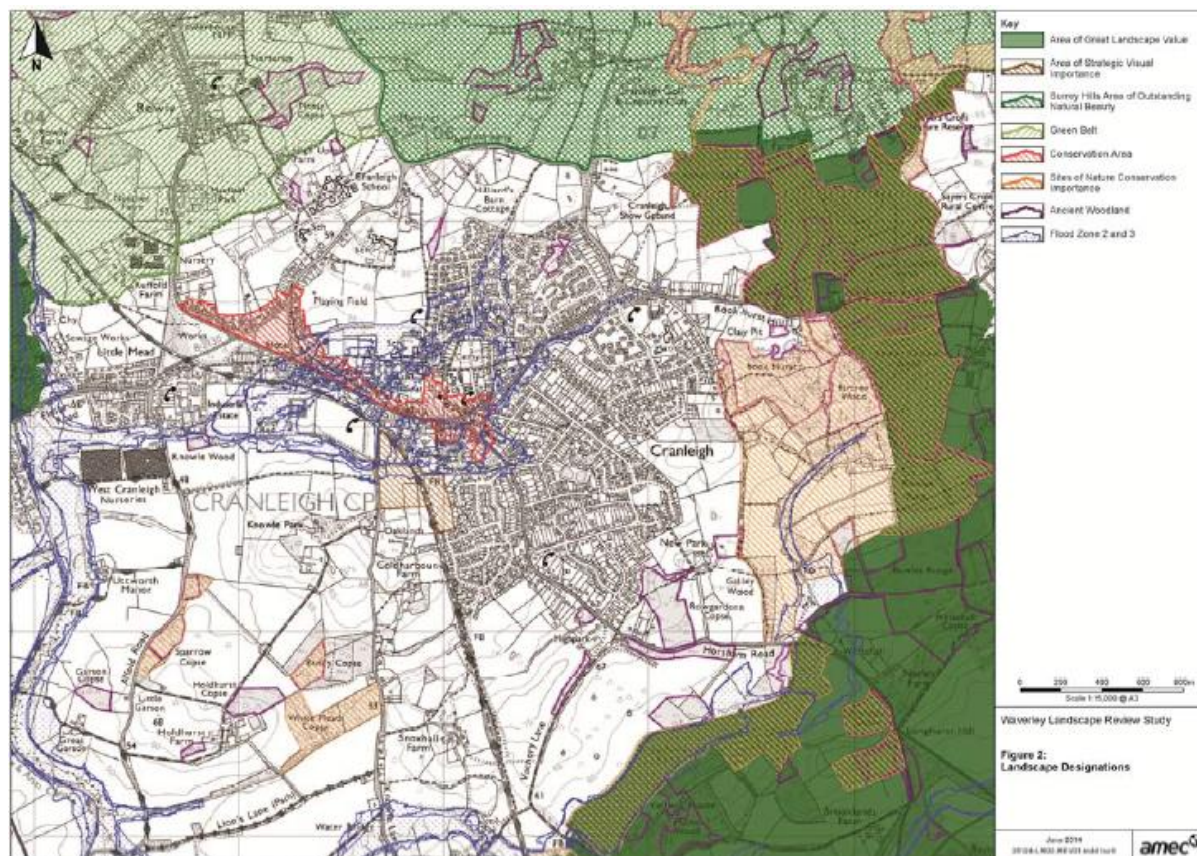


Figure 7: Cranleigh Landscape Designations Map (NB: The Cranleigh Conservation Area now extends to the south of the High Street and Common)

In conclusion this area continues to comply with the original ASVI designation and the following sections support its extension to include the eastern corner of Snoxhall Fields, the Beryl Harvey Conservation Field (including allotments) and the fields to the east of the Beryl Harvey Field and west of the allotments (see Figure 1: Proposed extended ASVI). This would ensure that the views from the DLp are conserved and enhanced for residents and visitors alike, in addition to the wider views towards the Surrey Hills AONB. It would protect important biodiversity as identified in the area's designation as a site of Nature Conservation Importance and it preserves and enhances a strategic area of open land that penetrates the village like a green "lung".

Snoxhall Fields, with the exclusion of The Paddock, is dedicated as a public playing field and recreation ground or public park for the benefit of the inhabitants of Cranleigh and thereabouts and is titled Fields in Trust Protected Site, Snoxhall Fields.

Eastern Area of Snoxhall Fields

The Eastern Corner forming part of what is known as Snoxhall Fields should also be included in the ASVI designation. This land was purchased by the Parish Council on 15 November 1965 and registered with HM Land Registry 3 March 1966. There is no apparent reason for its omission and the review of the ASVI is an opportunity to rectify this anomaly.

The site is located on the north-eastern edge and is part of Snoxhall Fields. It contains established trees, native hedging an area of grassland, paths and a Centenary Memorial. It is adjacent to the Snoxhall Play Park and visible from the DLp.

It is dedicated as a public playing field and recreation ground for the benefit of the inhabitants of Cranleigh and thereabouts and the site shall be titled Centenary Field, Snoxhall Fields Corner.

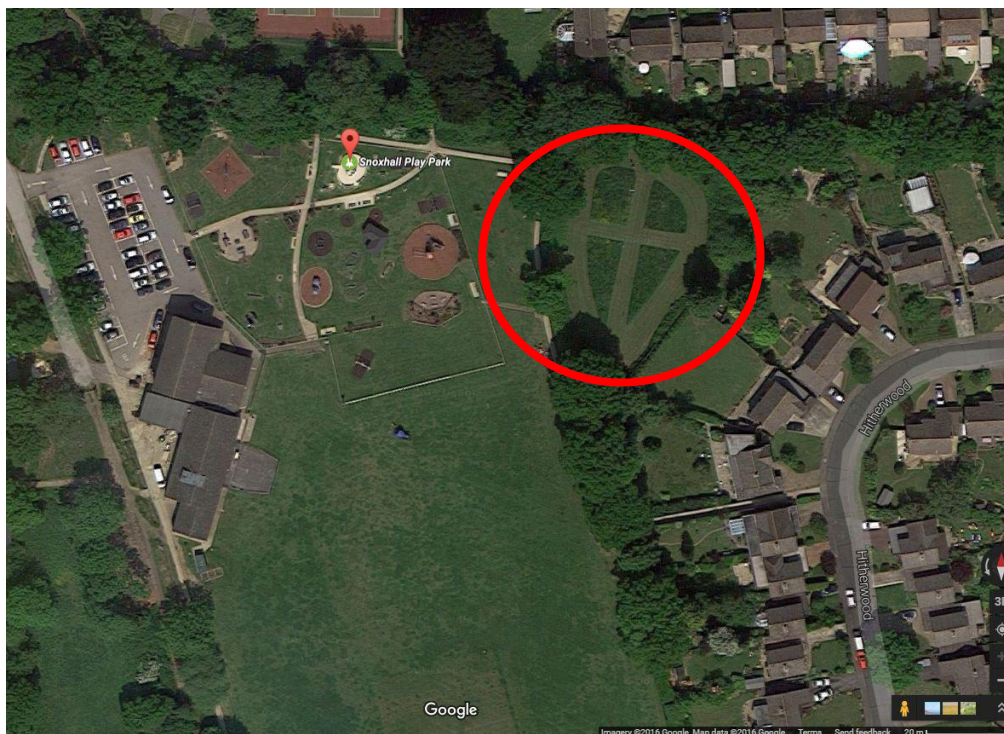


Figure 8: Corner of Snoxhall Fields indicated by red circular outline



Figure 9: Looking South from the Eastern Area of Snoxhall Fields towards the Downs Link path

Beryl Harvey Field

The Beryl Harvey Field on Knowle Lane, was donated to the people of Cranleigh in perpetuity by Mr Gordon Harvey in memory of his late wife to be used as a public open space. It is owned by Cranleigh Parish Council on behalf of, and for the benefit of, the Cranleigh community. It is dedicated as a public playing field and recreation ground and allotments for the benefit of the inhabitants of Cranleigh and thereabouts and the site is titled Fields in Trust Protected Site, Beryl Harvey Field. The allotments are statutory allotments in accordance with the Small Holdings and Allotments Act 1908, s23 (1).



Figure 10: the Beryl Harvey Field including allotments

The entire site consists of 3.5 acres and was originally laid out entirely as allotments. From the early 1980's these were confined to the lower third of the area amounting to approx. 1.5 acres. In 1986, with the support of the Parish Council and Waverley Borough Council, the remainder of the land was set aside for conservation purposes. These 2 acres have been managed by Cranleigh and District Conservation Volunteers since 1987, with funding from the Heritage Lottery Fund, the Co-operative Society Ltd and the Gatwick Airport Community Trust. The area is open to the community at all times of the year.



Figure 11: Sign at the Beryl Harvey Field

The conservation field hosts a wide variety of wild spring flowers from roses and bluebells to cowslips and many Common Spotted Orchids. The pond dug in 2000 also attracts local wildlife including, great crested newts, a wide variety of birds, several species of dragonfly and all-important bees. Creating havens of wildflowers like the Beryl Harvey field is essential to provide food and shelter for bees and is helping to reverse the trend of our declining bee population.



Figure 12: Common Spotted Orchid taken on Beryl Harvey Field

In summer flowers appear in the field including Lady's Bedstraw, Betony and Bird's Foot Trefoil. Later in the season swarms of common blue butterflies can be seen, together with the Meadow Brown and Gatekeeper butterflies. Large and small Skipper butterflies are common visitors, as well as the large and small white butterflies which feed on Knapweed flowers and there have even been reported sightings of the small brown and green Hairstreak butterflies. Red kites are also frequently seen flying over this area.



Conservation
Volunteers on the
Beryl Harvey Field



Wildlife Survey by Cranleigh Conservation Group Completed May 2016

Birds
Crows:
1. Crow
2. Jackdaw
3. Magpie
4. Jay
Ducks:
1. Mallard
2. Moorhen
3. Mandarin
Finches:
1. Chaffinch
2. Greenfinch
3. Goldfinch
4. Bullfinch
Owls:
1. Little Owl
2. Barn Owl
Raptors:
1. Kestrel
2. Sparrow Hawk
3. Buzzard
Thrushes:
1. Mistle Thrush
2. Song Thrush
3. Blackbird
4. Redwing
5. Fieldfare
Tits:
1. Blue Tit
2. Great Tit
3. Long Tailed Tit
4. Coal Tit
Woodpecker
1. Green Woodpecker
2. Great Spotted Woodpecker
Warblers
1. Lesser Whitethroat
2. Whitethroat
3. Chiffchaff
4. Blackcap

5. Garden Warbler
Other Birds:
1. Wren
2. Robin
3. Dunnock
4. Tree creeper
5. Nuthatch
6. Starling
7. Woodpigeon
8. Collar Dove
9. Pheasant
10. Red Legged Partridge
11. Swift
12. Swallow
13. House Martin
14. Grey Heron
15. Spotted Flycatcher
16. Pied Flycatcher
Insects
1. Dragonfly
2. Honey Bees
3. Bumble Bees
4. Water Boatmen
5. Mayfly
6. Grasshoppers
7. Stag Beetle
Butterflies (Francis Kelly)
1. Gatekeeper
2. Meadow Brown
3. Ringlet
4. Large Skipper
5. Small Skipper
6. Small Heath
7. Large White
8. Small White
9. Comma
10. Small Tortoiseshell
11. Peacock
12. Red Admiral
13. Painted Lady
14. Green Hairstreak
15. Small Copper
16. Holly Blue
17. Common Blue
18. Orange Tip

19. Marbled White
Mammals
1. Roe Deer
2. Fox
3. Badger
4. Rabbit
5. Short-tailed Field Vole
6. Field Mouse
7. Harvest Mouse
8. Stoat
9. Weasel
Reptiles
1. Grass Snake
2. Common Frog
3. Great Crested Newt
4. Smooth Newt

Beryl Harvey Plant Survey 1

Cranleigh, Beryl Harvey Field	Recorders S. Cooper & J. Leslie			
27-Jul-15				
Acer campestre	Field Maple			
Achillea millefolium	Yarrow			
Achillea ptarmica	Sneezewort			
Agrimonia eupatoria	Agrimony			
Agrostis capillaris	Common Bent			
Alisma plantago-aquatica	Water-plantain	In/around small field pond.		
Alliaria petiolata	Garlic Mustard			
Arrhenatherum elatius	False Oat-Grass			
Arum maculatum	Lords-and-Ladies			
Betonica officinalis	Betony			
Betula pendula	Silver Birch			
Buddleja davidii	Butterfly-bush			
Calystegia sepium	Hedge Bindweed	In/around small field pond.		
Cardamine hirsuta	Hairy Bitter-cress			
Carex pseudocyperus	Cyperus Sedge	In/around small field pond.		
Centaurea nigra	Common Knapweed			
Cerastium fontanum	Common Mouse-ear			
Chamerion angustifolium	Rosebay Willowherb			
Circaea lutetiana	Enchanter's-nightshade			
Cirsium arvense	Creeping Thistle			
Cirsium palustre	Marsh Thistle			
Cornus sanguinea	Dogwood			
Crataegus monogyna	Hawthorn			
Crepis capillaris	Smooth Hawk's-beard			
Dactylis glomerata	Cock's-foot			
Dactylorhiza fuchsii	Common Spotted-orchid			
Dipsacus fullonum	Wild Teasel			
Dryopteris filix-mas	Male-fern			
Elodea nuttallii	Nuttall's Waterweed	In/around small field pond.		
Epilobium ciliatum	American Willowherb			
Epilobium parviflorum	Hoary Willowherb			
Euonymus europaeus	Spindle			
Eupatorium cannabinum	Hemp-agrimony	In/around small field pond.		
Festuca rubra	Red Fescue			
Fraxinus excelsior	Ash			
Galium aparine	Cleavers			
Galium palustre	Marsh-bedstraw	In/around small field pond.		

<i>Galium verum</i>	Lady's Bedstraw			
<i>Geum urbanum</i>	Wood Aven			
<i>Glechoma hederacea</i>	Ground-ivy			
<i>Heracleum sphondylium</i>	Hogweed			
<i>Holcus lanatus</i>	Yorkshire-fog			
<i>Hyacinthoides non-scripta</i>	Bluebell			
<i>Hypericum perforatum</i>	Perforate St John's-wort			
<i>Iris pseudacorus</i>	Yellow Iris	In/around small field pond.		
<i>Juncus effusus</i>	Soft-rush	In/around small field pond.		
<i>Lotus corniculatus</i>	Common Bird's-foot-trefoil			
<i>Lycopus europaeus</i>	Gypsywort	In/around small field pond.		
<i>Lysimachia nummularia</i>	Creeping-Jenny	In/around small field pond.		
<i>Lythrum salicaria</i>	Purple-loosestrife	In/around small field pond.		
<i>Malva moschata</i>	Musk-mallow			
<i>Mentha aquatica</i>	Water Mint	In/around small field pond.		
<i>Mentha arvensis</i>	Corn Mint			
<i>Odontites vernus</i>	Red Bartsia			
<i>Plantago lanceolata</i>	Ribwort Plantain			
<i>Poa trivialis</i>	Rough Meadow-grass			
<i>Potentilla reptans</i>	Creeping Cinquefoil			
<i>Primula veris</i>	Cowslip			
<i>Primula vulgaris</i>	Primrose			
<i>Prunella vulgaris</i>	Selfheal			
<i>Prunus avium</i>	Wild Cherry			
<i>Prunus spinosa</i>	Blackthorn			
<i>Pulicaria dysenterica</i>	Common Fleabane			
<i>Quercus robur</i>	Pedunculate Oak			
<i>Ranunculus acris</i>	Meadow Buttercup			
<i>Ranunculus flammula</i>	Lesser Spearwort	In/around small field pond.		
<i>Ranunculus repens</i>	Creeping Buttercup			
<i>Rosa canina</i> agg.	Dog-rose			
<i>Rubus fruticosus</i> agg.	Bramble			
<i>Rubus idaeus</i>	Raspberry			
<i>Rumex crispus</i>	Curled Dock			
<i>Rumex sanguineus</i>	Wood Dock			
<i>Salix caprea</i>	Goat Willow			
<i>Salix cinerea</i> subsp. <i>oleifolia</i>	Rusty Willow			
<i>Sambucus nigra</i>	Elder			
<i>Scrophularia nodosa</i>	Common Figwort			
<i>Senecio jacobaea</i>	Common Ragwort			
<i>Solanum dulcamara</i>	Bittersweet	In/around small field pond.		

Sorbus aucuparia	Rowan			
Sorbus torminalis	Wild Service-tree			
Stachys palustris	Marsh Woundwort	In/around small field pond.		
Stellaria graminea	Lesser Stitchwort			
Taraxacum agg.	Dandelion			
Taxus baccata	Yew			
Trifolium repens	White Clover			
Typha latifolia	Bulrush	In/around small field pond.		
Urtica dioica	Common Nettle			
Veronica chamaedrys	Germander Speedwell			
Vicia cracca	Tufted Vetch			
Vicia hirsuta	Hairy Tare			
Vicia tetrasperma	Smooth Tare			
Anemone nemorosa	Wood anemone	From here below added by Miki Marks 28 May 2016		
Carpinus betulus	Hornbeam			
Castanea sativa	Sweet chestnut			
Corylus avellana	Hazel			
Frangula alnus	Alder buckthorn			
Hedera helix	Ivy			
Hypericum tetrapterum	Square stalked St John's-wort			
Ilex aquifolium	Holly			
Lonicera periclymenum	Honeysuckle			
Malva sylvestris	Common mallow			
Narcissus pseudonarcissus	Wild daffodil			
Senecio vulgaris	Groundsel			

Allotments Plant Survey 2

Records for Cranleigh Allotments. 27th July 2015	
Recorders S. Cooper & J. F. Leslie	
Achillea millefolium	Yarrow
Aethusa cynapium	Fool's Parsley
Anagallis arvensis	Scarlet Pimpernel

<i>Arrhenatherum elatius</i>	False Oat-Grass
<i>Atriplex prostrata</i>	Spear-leaved Orache
<i>Capsella bursa-pastoris</i>	Shepherd's-purse
<i>Centaurea nigra</i>	Common Knapweed
<i>Chenopodium polyspermum</i>	Many-seeded Goosefoot
<i>Convolvulus arvensis</i>	Field Bindweed
<i>Cyperus longus</i>	Galingale
<i>Digitalis purpurea</i>	Foxglove
<i>Dipsacus fullonum</i>	Wild Teasel
<i>Dryopteris filix-mas</i>	Male-fern
<i>Epilobium ciliatum</i>	American Willowherb
<i>Euphorbia peplus</i>	Petty Spurge
<i>Galeopsis bifida</i>	Bifid Hemp-nettle
<i>Gnaphalium uliginosum</i>	Marsh Cudweed
<i>Holcus lanatus</i>	Yorkshire-fog
<i>Kickxia spuria</i>	Round-leaved Fluellen
<i>Lamium purpureum</i>	Red Dead-nettle
<i>Lapsana communis</i>	Nipplewort
<i>Lepidium didymum</i>	Lesser Swine-cress
<i>Lolium perenne</i>	Perennial Rye-grass
<i>Papaver somniferum</i>	Opium Poppy
<i>Persicaria maculosa</i>	Redshank
<i>Plantago major</i>	Greater Plantain
<i>Poa annua</i>	Annual Meadow-grass
<i>Polygonum aviculare</i>	Knotgrass
<i>Rubus fruticosus</i> agg.	Bramble
<i>Rumex acetosa</i>	Common Sorrel
<i>Sagina procumbens</i>	Procumbent Pearlwort
<i>Senecio jacobaea</i>	Common Ragwort
<i>Senecio vulgaris</i>	Groundsel
<i>Solanum nigrum</i>	Black Nightshade
<i>Sonchus asper</i>	Prickly Sow-thistle
<i>Sonchus oleraceus</i>	Smooth Sow-thistle
<i>Stellaria media</i>	Common Chickweed
<i>Trifolium repens</i>	White Clover
<i>Urtica dioica</i>	Common Nettle
<i>Veronica agrestis</i>	Green Field-speedwell
<i>Veronica persica</i>	Common Field-speedwell
<i>Veronica serpyllifolia</i>	Thyme-leaved Speedwell

Additional Fields

The proposal to extend the ASVI includes two further fields (outlined in red below) belonging to private residential properties; Coldharbour Farm and The Brew. This completes the jigsaw of the ASVI and creates a coherent area that works for both residents and the natural environment alike.

Both the current owners of these properties have been advised of this intention to extend the ASVI and the owners of Coldharbour Farm have indicated that this proposal is acceptable to them.



Figure 13: Additional Fields proposed to be included in the ASVI

The inclusion of this additional area will ensure that the essential views across the ASVI and from the Downs Link are protected and thoroughly enhanced. It will also serve to protect the biodiversity being improved and actively encouraged on the adjacent Conservation Field, providing options for wildlife to travel and find new food and water sources. It also creates a green buffer, helping to avoid coalescence of the eastern and western developed areas of the village to the south of the High Street. Furthermore, this extension of the ASVI preserves and strengthens the green lung effect penetrating the very heart of the village.



Figure 14: Additional Fields taken looking south

Conclusion

The existing ASVI should be maintained, enhanced and extended to include the Eastern Corner of Snoxhall Fields, the Beryl Harvey Field (including allotments) and Additional Fields. This will conserve and enhance important views to the south of Cranleigh and the Surrey Hills AONB, in addition to those from the DLp. Other than from the ASVI, these open views within the built environment of Cranleigh have been completely lost since three major developments of 765 dwellings were approved immediately to the south of the high street, west of the ASVI and adjacent to the DLp.

The ASVI has a crucial role in conserving and enhancing the character of Cranleigh within its rural landscape, whilst preventing the coalescence of the developed areas of Cranleigh to the south and east of the village. This combined and contiguous area of open land is the only accessible area for residents and visitors of its type in the south of the village and provides a unique and significant area for trees, plants and wildlife.

Furthermore, it creates an essential and accessible visual break in the built form, is widely used by the community, and creates a smooth transition between the built environment and the natural environment beyond. It penetrates what will be, with significant new development, an increasingly urban area and provides an all essential green lung, as well as easy access to an open recreational green space which can be enjoyed by all.



Figure 15: View looking North across The Paddock Field to the Surrey Hills beyond

Appendix A

USERS OF SNOXHALL FIELDS, YOUTH CENTRE AND PAVILION

	VENUE	AD HOC	MON	TUES	WED	THURS	FRI	SAT	SUN
KARATE	YOUTH CLUB						16		
EARLY MORNING FITNESS SESSION	YOUTH CLUB AND GROUNDS		10		10		10		
BOOT CAMP	YOUTH CLUB		10		10				
NATIONAL AUTISTIC SOCIETY	YOUTH CLUB			3					
FITNESS GROUP (AM)	YOUTH CLUB			10 TO 16			10 TO 16		
SURREY COUNTY COUNCIL - YOUTH SERVICES	YOUTH CLUB / OUTREACH		15		15				
GREENWAYS	PAVILION		26	26	26	26			
FOOTBALL - CFC	PAVILION AND GROUNDS								200
FOOTBALL - CFYC	PAVILION AND GROUNDS								28
CRANLEIGH VETERANS	PAVILION AND GROUNDS			play					approx 20
LOXWOOD FOOTBALL CLUB	YOUTH CENTRE								22
BHF	GROUNDS (LARGE EVENT)	250							
CHARTER HOUSE	CAR PARK (CHARITY WALK	2 OVERNIGHT HIKE APPROXIMATELY 80 WALKERS PER HIKE							
PARK RUN (ADULT)		Between 40 - 100 - Average 67.2 a week							Between 40 - 100 - Average 67.2 a wk

Other events in 2017			
MABAC Cranleigh (road race)	March	Grounds	unknown
Local school (Bikeathon)	July	Grounds and buildings	up to 75
Private Party	July	Pavilion	up to 60
Rowleys Prom in the Park	July	Grounds and buildings	unknown
Brighton Trek (British Heart Foundation)	September	tap in car park	200 approximately
Santas Dash	December	Grounds	unknown
Playgroup (taster session)	April	Youth Centre	up to 40
Junior sports group (2 x taster Sessions)		Youth Centre	up to 40
Junior sports group (taster session)	April	Youth Centre	up to 40
Private Party	June	Youth Centre	up to 40
Local nursery (end of year party)	July	Youth Centre	up to 40
Private Party	October	Youth Centre	up to 40
Private Party	December	Youth Centre	up to 40
Bootcamp	through out year	Grounds	Unknown
Bootcamp	through out year	Grounds	Approximately 8